

**Precast stairs and landings in a "block and plank" Dormitory**

Job: California University SAI Student Housing (Phase 5) – California, PA

Customer: NDC Builders – Pittsburgh, PA

Architect: WTW Architects – Pittsburgh, PA

Scope: (3) Interior Stair Towers for a total of (18) Stairs and (18) Landings

Order date: 6/21/06

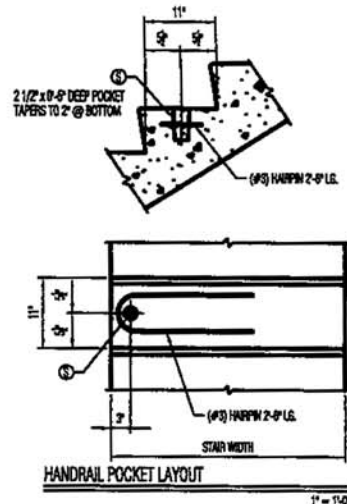
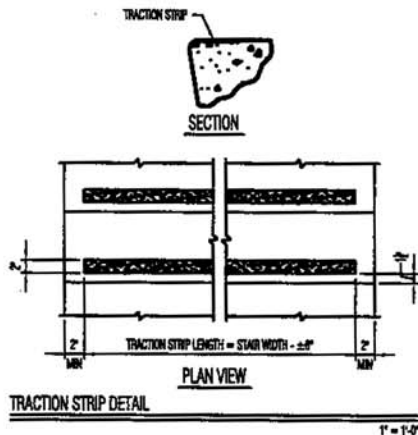
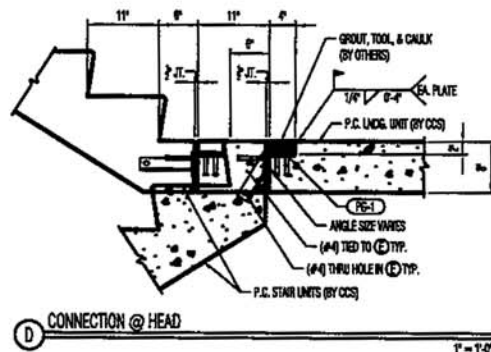
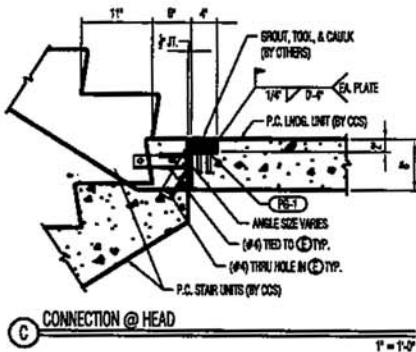
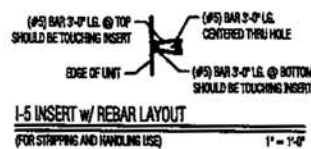
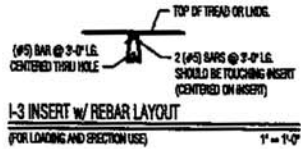
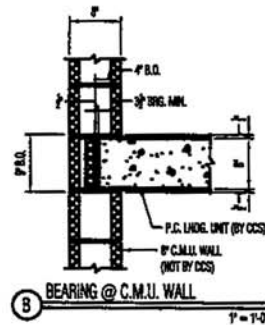
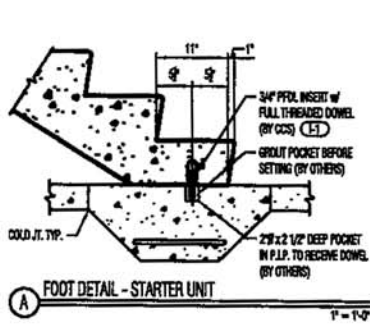
First day of production: 7/24/06

(4 week lead time!)

This multi-phase project consisted of new student housing for a growing number of students at "CAL U". Students can be assured of a 4 hour fire resistance rating with Castcon's 8" thick stair and landing configuration. WTW detailed in many of Castcon's standard design features into the contract drawings. A recent survey shows that each piece of precast can be set in 20 to 30 minutes, which means one full level can be available by the workers on site within two hours. That's fast! We are proud to have NDC Builders as a repeat customer and look forward to more projects like this. We are also pleased to have WTW use our standard details when designing stair towers.

The following is a section of Stair "B" in Phase 5, along with standard details for this job which include: (A) Starter Foot, (B) Bearing @ CMU Wall, (C) Connection @ Head, (D) Connection @ Head, Traction Strip Impression, and Handrail Pocket Layout.





# PHASE 5 SAI STUDENT HOUSING

CALIFORNIA, PA.

## DETAILS & NOTES

DRAWINGS USED:

CONTRACT DWGS RECEIVED 06/26/06

CONTRACTOR:

N.D.C. BUILDERS

ARCHITECT:

WTW ARCHITECTS